

# CHAMOT

## Recombinant IL-1 beta, Human, GMP

CM002-100HPG  
CM002-1000HPG



CHAMOT

喬默生物技術(上海)有限公司  
CHAMOT BIOTECHNOLOGY CO., LTD.

# CONTENT

1 产品简介

2 产品组成

3 产品储存

4 产品使用

5 产品规范

## Recombinant IL-1 beta (Interleukin-1 beta), Human, GMP

编号:	CM002-100HPG CM002-1000HPG	规格:	100 µg 1 mg
类别:	重组蛋白	应用:	Functional Assay

### 产品简介

**描述:** Interleukin-1 beta (IL-1 $\beta$ ) also known as leukocytic pyrogen, leukocytic endogenous mediator, mononuclear cell factor, lymphocyte activating factor and other names, is a cytokine protein that in humans is encoded by the IL1B gene. There are two genes for interleukin-1 (IL-1): IL-1 alpha and IL-1 beta (this gene). IL-1 $\beta$  precursor is cleaved by cytosolic caspase 1 (interleukin-1 beta convertase) to form mature IL-1 $\beta$ .

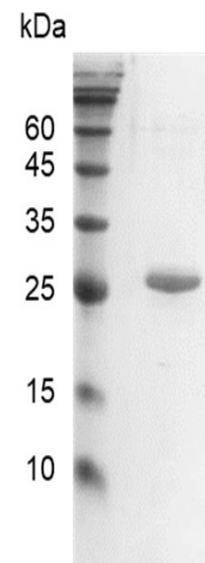
**来源:** *Escherichia coli*.  
Animal-free reagent and laboratory.  
Manufactured and tested under GMP guideline.

**纯度:** >97% as determined by SDS-PAGE analysis.

**生物学活性:** Measure by its ability to induce IL-8 secretion in HT29 cells. The ED<sub>50</sub> for this effect is <2.0 ng/mL. The specific activity of recombinant human IL-1 beta is approximately >3 x 10<sup>7</sup> IU/mg, which is calibrated against the human IL-1 beta WHO International Standard (NIBSC code: 86/680).

**内毒素检测:** <0.05 EU per 1 µg of the protein by the LAL method.

**蛋白序列:** MASAPVRSLNCTLRDSQQKSLVMSGPYELKAL  
HLQQQDMEQQVVFMSFVQGEESNDKIPVAL  
GLKEKNLYLSCVLKDDKPTLQLESVDPKNYPKK



SDS-PAGE analysis of recombinant IL-1 beta,  
Human, GMP



KMEKRFVFNKIEINNKLEFESAQFPNWIYSTSQ  
AENMPVFLGGTKGGQDITDFTMQFVSS with  
polyhistidine tag at the C-terminus.

## 产品组成

成分: 从含有 1X PBS, pH 8.0 溶液中冻干的蛋白质,  
无任何动物源性成分.

## 产品储存

储存: -20°C冻干粉保存 1 年.  
运输: 蓝冰.

## 产品使用

- 1、开盖前, 建议3000-3500rpm离心5min。
- 2、推荐使用无菌水重悬冻干粉, 溶液浓度不低于500µg/mL, 并室温静置至少20min以充分溶解。勿涡旋剧烈振荡。
- 3、重悬后的溶液, 2-8°C无菌保存不超过1周。
- 4、如需长期保存, 推荐使用无菌的含载体蛋白 (如0.1%BSA、10%FBS 或5%HSA) 的溶液进一步稀释 (不低于10ug/mL) 后分装保存, -20至-80°C无菌保存3到6个月。无血清实验需求时, 可更换为 5%海藻糖溶液作为载体。避免反复冻融。

## 产品规范

CHAMOT GMP recombinant proteins are manufactured in ISO 13485:2016 and GMP certified facility.  
The processes include:

- ★Testing and traceability of raw material
- ★Records of the maintenance and equipment calibration
- ★Personnel training records
- ★Batch-to-batch consistency
- ★Documentation of QA control and process changes
- ★Manufactured and tested under an ISO 13485:2016 certified quality management system
- ★Stability monitor of product shelf-life

WB=Western Blot; IP=Immunoprecipitation; IF=Immunofluorescence; IHC=Immunohistochemistry;  
FACS=Fluorescence activated Cell Sorting; FA=Functional Assay

**CHAMOT Biotechnology (Shanghai) Co., Ltd.**

**For Research Use Only. Not for use in diagnostic or therapeutic procedures**